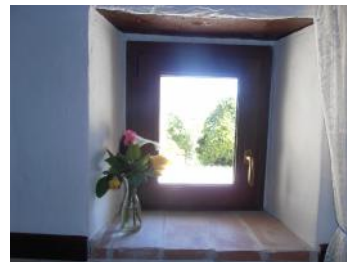
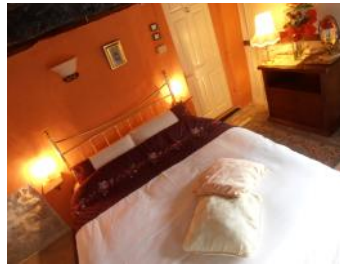


The Lavender Room – a romantic, spacious and relaxing retreat
(Room size approximately 23m² plus en-suite shower room approximately 5m²)

In the oldest part of our house this room facing east has one metre thick stone walls, ancient oak beams and exposed stonework. Very quiet, naturally warm in the cooler months and cool in the summer. **Features:** Own independent entrance * Guests can come and go as they please * Views of the original garden, Bay, Peach, Oak trees and beyond * Double glazed windows * Large double bed with designer bedding * Electric kettle with complimentary teas, coffees etc * Refrigerator * Entertainment centre * Ample phone/pad charging points * Independently controlled heating * Cooling fan * Hair dryer * Complimentary toiletries * Bath robes * Free Wi-Fi in room and in the outside areas * Wake up call * **Other:** Debit/Credit cards (swipe, pin or contact less) accepted * Free parking on-site * Plates, cutlery etc provided for picnics in the gardens/olive groves * Adults only – sorry our old house is not suitable for little people * Pets not allowed * Non smoking in the property but permitted outside * Ironing facilities * Outside drying facilities * Special diet menus with prior request * **Common areas:** Seating areas in the terraced gardens * Courtyard * Olive groves *



Some photographs illustrating The Lavender Room.